

**Saint John's
Cancer Center
Annual Report
2005**

Saint John's Cancer Services 2005

We said good-bye to a pioneer in cancer care at Saint John's. Dr. V.C. Amin, medical oncologist, served our community for over 25 years. His willingness to explore new avenues led us to the present status of ACoS (American College of Surgeons) approval for our facility.

In 2005, we also welcomed Drs. Darrel Ross, radiation oncologist, and Mike Conjalka, medical oncologist, who will guide us into 2006 and continue the growth of our program.

You will see in our report the Cancer Registry statistics as well as the site-specific comparisons of Saint John's data to National Cancer Data Base (NCDB) for the year 2005. Also included in our report is a synopsis of kidney cancer, with a five year survival comparison with the NCDB cases for the same time frame.



Joining Saint John's Cancer Center in 2005 were (above) Radiation Oncologist Darrel Ross and (right) Medical Oncologist Michael Conjalka.

2005 Cancer Frequency of Top Four Sites and Kidney Cancer

	Men		Women		
	SJHS	National	National	SJHS	
(26) Prostate	18%	33%	32%	36%	Breast (68)
(27) Lung	19%	13%	12%	14%	Lung 26)
(17) Colorectal	12%	10%	11%	11%	Colorectal (21)
(4) NHL	3%	2%	3%	2%	NHL (6)
(4) Kidney	1%	2%	1%	.5%	Kidney (1)
M total = 143			W total = 190		

Total number of cases 2005 SJHS = 333

Total number of cases 2005 estimated Nationwide = 1,372,910

Saint John's Cancer Registry maintains a 95% follow-up rate out of a Target 90% rate to meet national standards.

Kidney Cancer Analysis

Kidney cancer strikes 36,000 Americans each year. More than half of those found to have kidney cancer have no symptoms. Their kidney cancers were found serendipitously by imaging studies of the abdomen, pelvis or spine that were being performed for other medical reasons. The remainder of those found to have kidney cancer had mild to severe flank pain with or without gross blood in their urine.

The treatment of kidney cancer almost always involves the partial or total surgical removal of the affected kidney.

Patients with a small kidney cancer have greater than a 90% cure rate with nephrectomy alone. Patients with a large kidney cancer or patients who present with a kidney cancer that has already spread beyond the covering kidney capsule do not do nearly as well. Patients with metastatic kidney cancer either at presentation, or that has developed from a large kidney cancer, until recently have had a greater than 50% chance of dying within the first year.

However, many discoveries concerning the molecular biology of kidney cancer have been made in the past several years. These discoveries have led to the development of new effective medications that appear to significantly improve the survival of patients with metastatic kidney cancer.

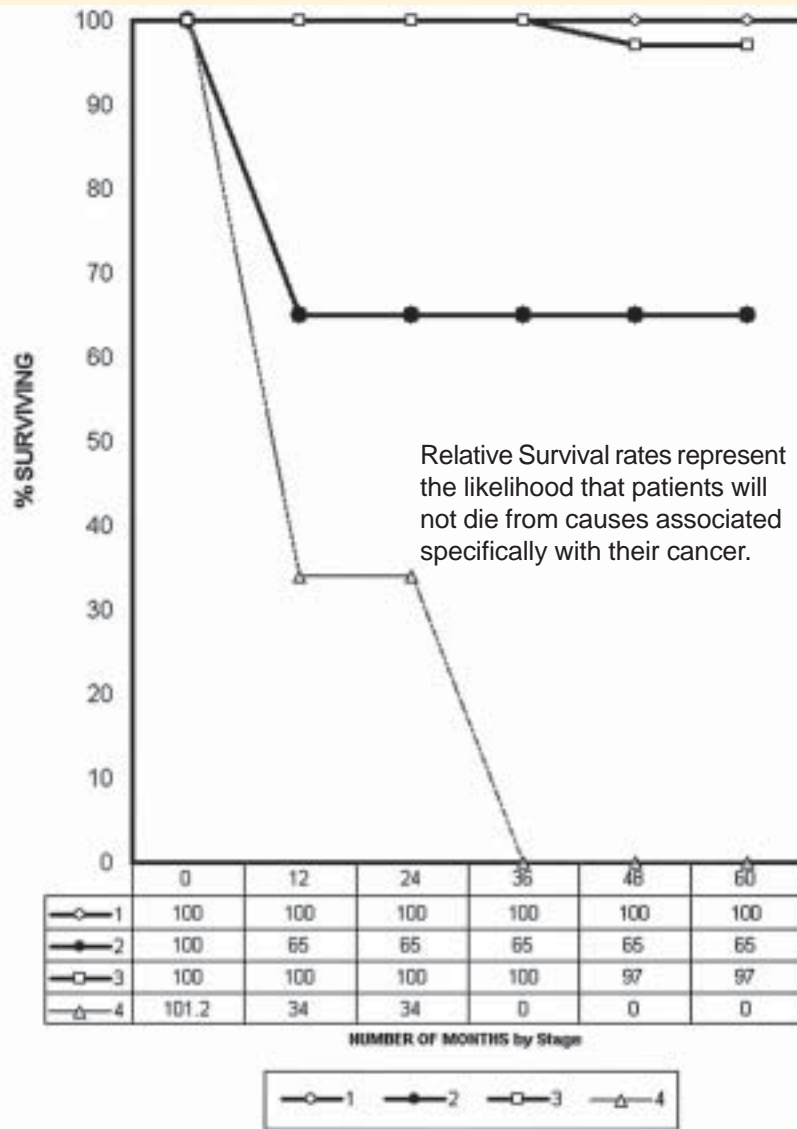
If you are concerned about kidney cancer, see your primary care physician. Talk about your concerns and ask if an abdominal CAT scan would be appropriate for you to have as a screening test for kidney cancer.

If kidney cancer is detected, seek the services of an experienced urological surgeon who can surgically remove the cancer by the type of kidney surgery best suited for your particular medical circumstances.

Lastly, any discussion of kidney cancer would be incomplete without noting that cigarette smoking, obesity, and a family history of kidney cancer are all significant risk factors for the development of kidney cancer. Thus, it is only common sense to not use tobacco products, to eat appropriately, to get plenty of exercise, and to know the medical history of your family.

Michael S. Conjalka, M.D.

FiveYear Relative Survival Rates for Kidney and Renal Pelvis Cancer Cases diagnosed 1995 at Saint John's Health System

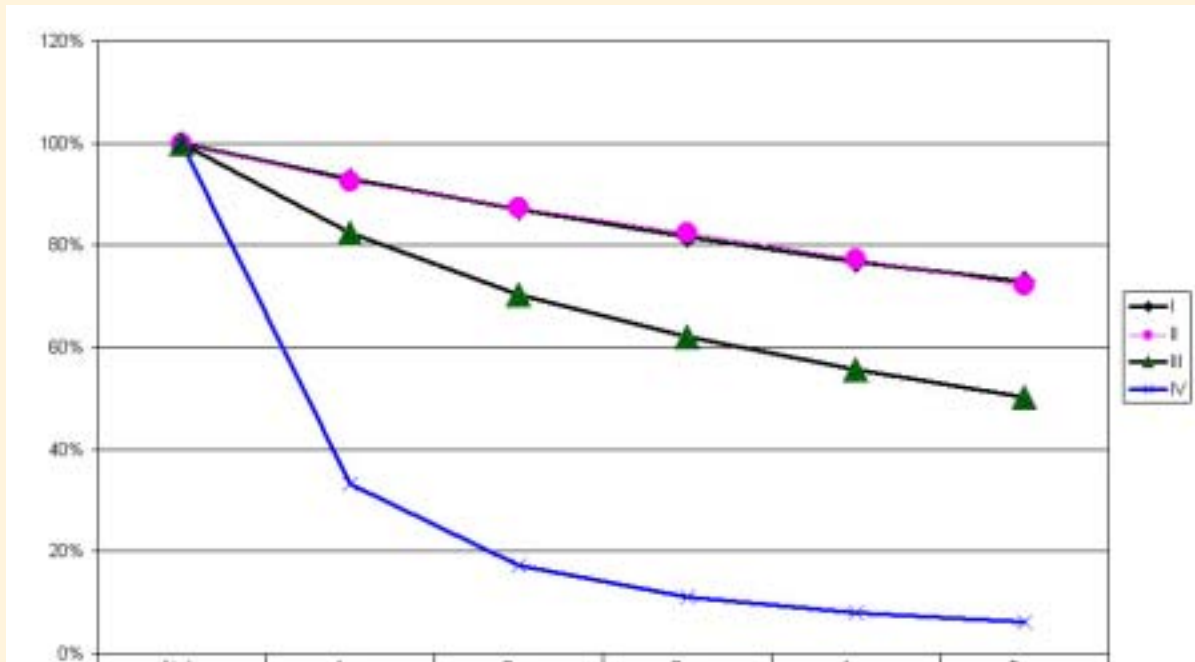


Five Year Survival Table for Kidney and Renal Pelvis Cancer Cases

Diagnosed in 1995 & 1996

All States / Data Reported from 492 Hospitals

Hospitals of Type: Comprehensive Community Cancer Center



Stage	Cases	At dx	1 yr	2 yr	3 yr	4 yr	5 yr	95% confidence Interval
I	1894	100	92.84	87.14	81.57	76.66	72.81	70.59 - 75.03
II	5794	100	92.55	87.39	82.49	77.3	72.16	70.86 - 73.46
III	2354	100	82.3	70.41	62.16	55.55	50.33	48.09 - 52.57
IV	3523	100	33.28	17.36	11.19	7.88	6.18	5.30 - 7.06
Overall	14886	100	74.79	65.22	59.25	54.27	50.17	49.29 - 51.05

Source: NCD, Commission on Cancer, ACoS/ACS. Survival Reports, v2.0 - October 23, 2006